



MONTHLY MEMBERSHIP PROGRESS REPORT

District 5M 1

Results as of: 06/30/2018

GMT: MICHAEL MOLENDIA

LOCATION MINNESOTA

GMT CA

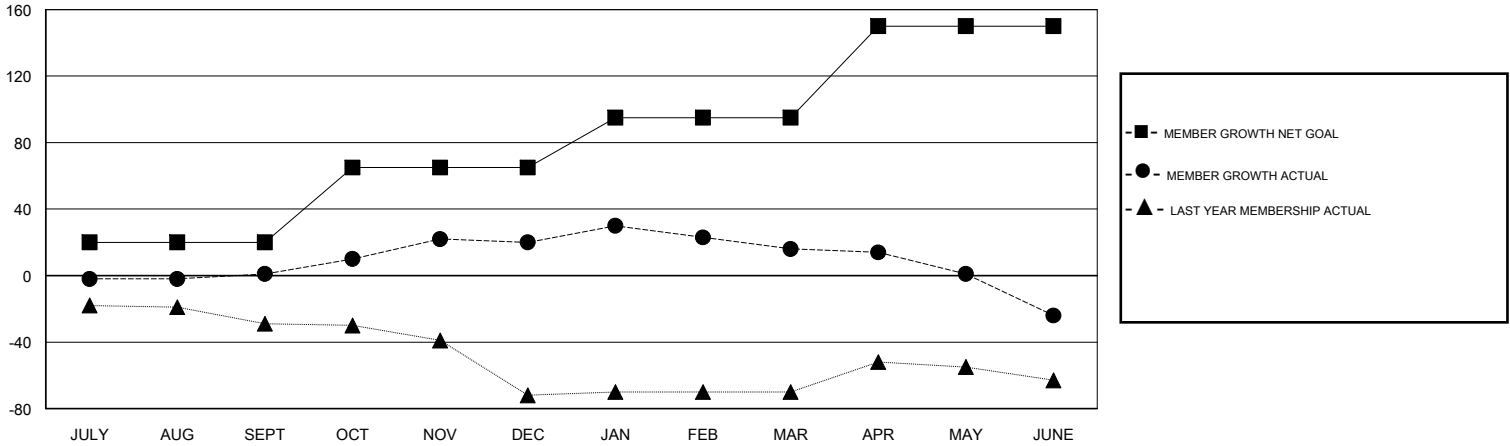
Clubs			
RESULTS FOR 2017-2018			
QUARTER	NEW CLUB GOAL	NEW CLUBS	DROPPED CLUBS
JULY/AUG/SEPT	0	0	0
OCT/NOV/DEC	1	0	0
JAN/FEB/MAR	0	0	0
APR/MAY/JUNE	1	0	0

Members			
RESULTS FOR 2017-2018			
QUARTER	MEMBER GROWTH NET GOAL	MEMBER GROWTH ACTUAL	DROPPED MEMBERS ACTUAL (including transfers)
JULY/AUG/SEPT	20	46	42
OCT/NOV/DEC	45	38	17
JAN/FEB/MAR	30	35	39
APR/MAY/JUNE	55	41	77

GOALS AND ACTUAL NEW CLUBS CUMULATIVE



GOALS AND ACTUAL MEMBERS CUMULATIVE



DROPPED CLUBS: 0	37 CLUBS OF 51 ADDED 1 OR MORE NEW MEMBERS	<u>GENDER DISTRIBUTION</u>	
DROPPED MEMBERS		MALE	1,377 (75.62%)
DECEASED	24	FEMALE	444 (24.38%)
CLUB CANCELLED	0	Women Percentage Fiscal Year Goal: 25%	
OTHER	151	TOTAL FAMILY UNIT MEMBERS 0	
TOTAL	175		
CLICK HERE FOR CUMULATIVE MEMBERSHIP DATA		FAMILY MEMBERS PAYING HALF DUES 0	